



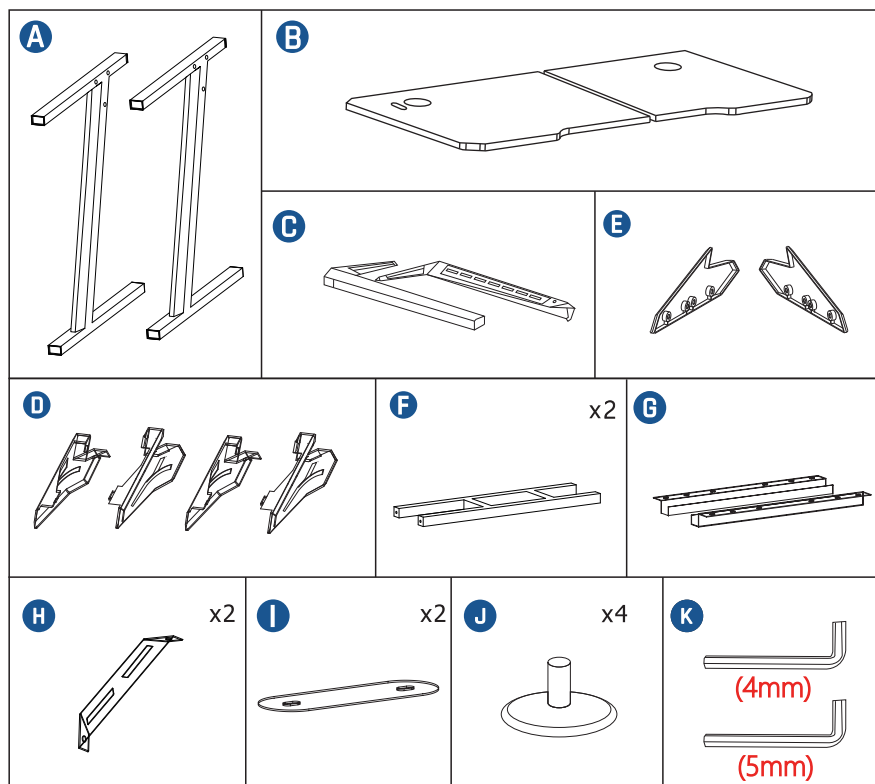
GAMING DESK

USER MANUAL 47 Inch

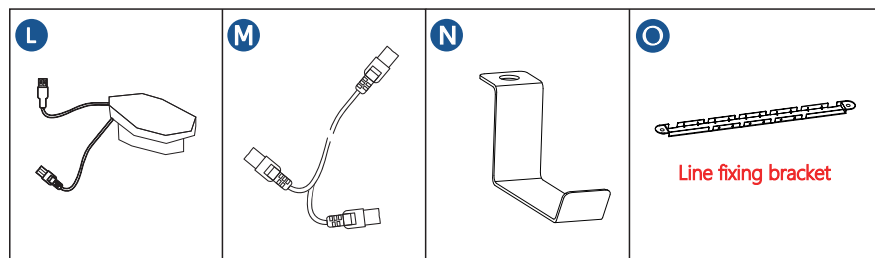


ASSEMBLY GUIDE


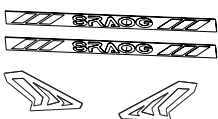


GAMING DESK








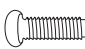

ACCESSORIES






ASSEMBLY GUIDE

<p>P</p> 	<p>Q</p> 	<p>R x8</p> 	<p>S x2</p> 
---	---	--	--

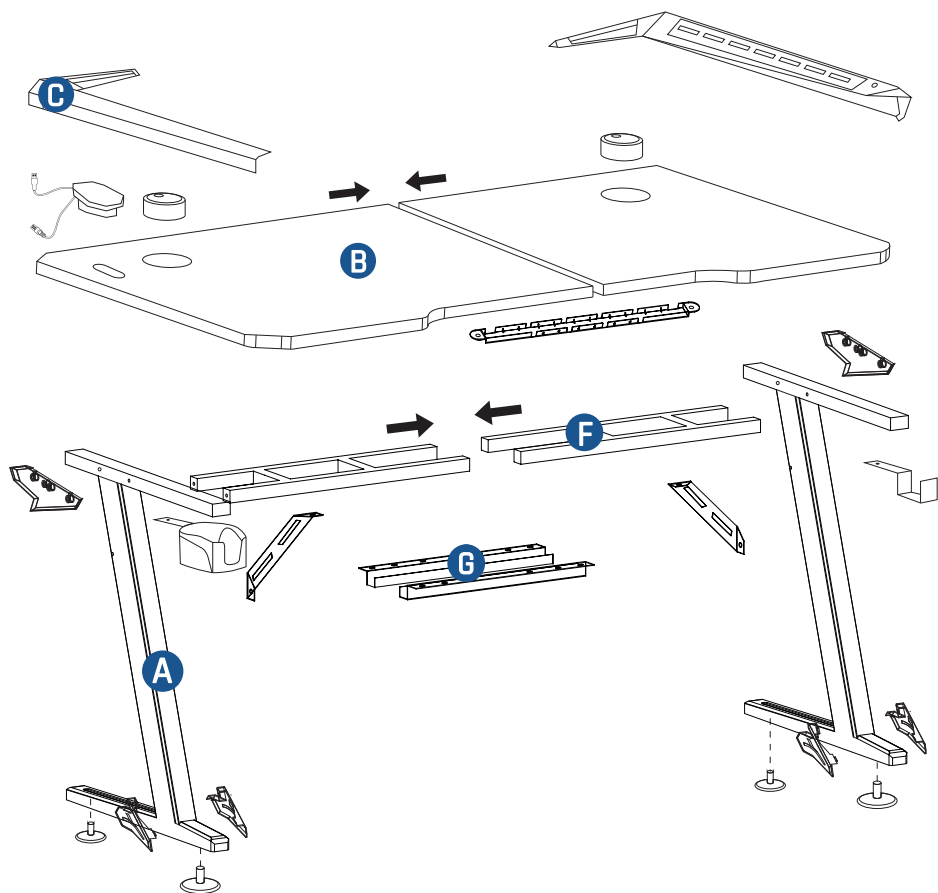
SCREWS & TOOLS

<p>1 x2</p>  <p>6x50mm</p> <p>x4</p>  <p>6x60mm</p>	<p>2 x10</p>  <p>M4 x 40mm</p>	<p>3 x2</p>  <p>6mm</p>
<p>4 x6</p>  <p>(black)</p> <p>M4 X 16mm</p>	<p>5 x12</p>  <p>6x20mm</p>	<p>6 x23</p>  <p>(silver)</p> <p>M4 X 16mm</p>

<p>7</p>  <p>10 mm</p>	<p>8</p> 	<p>9 x4</p> 
--	---	--

TIPS: (After receiving the product, please check the accessories as shown in the figure. If the accessories are missing, please contact us in time)

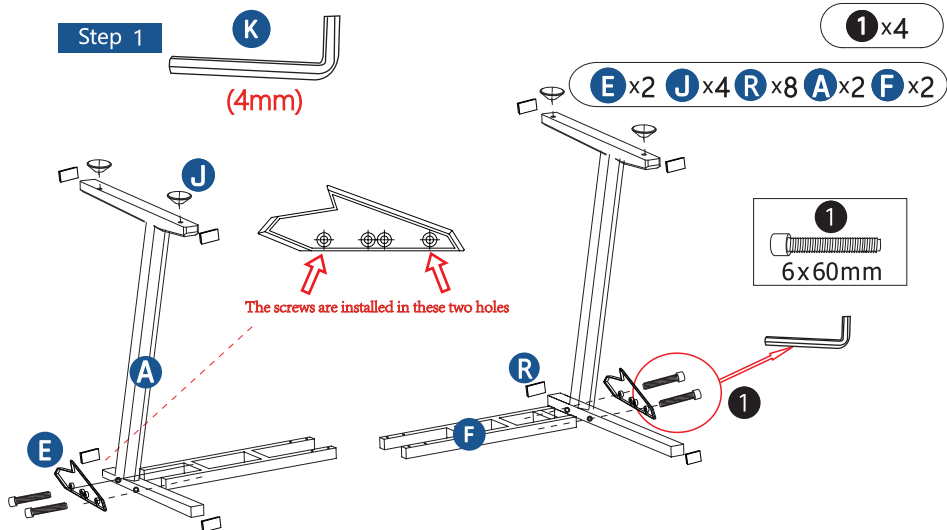
ASSEMBLY GUIDE



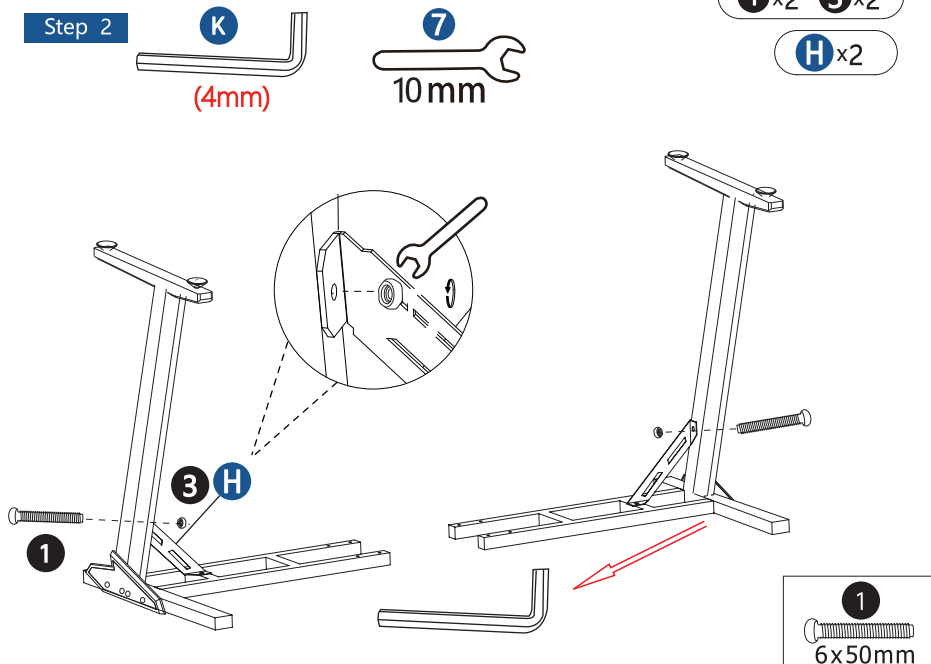
TIPS: Assemble the desk on a hard, flat surface. It is placed upside down for an easier assembly: we recommend placing a protective mat or cloth sheet to avoid staining or damaging the table or other surfaces.

ASSEMBLY GUIDE STEP 1 & 2

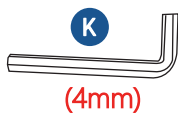
Step 1



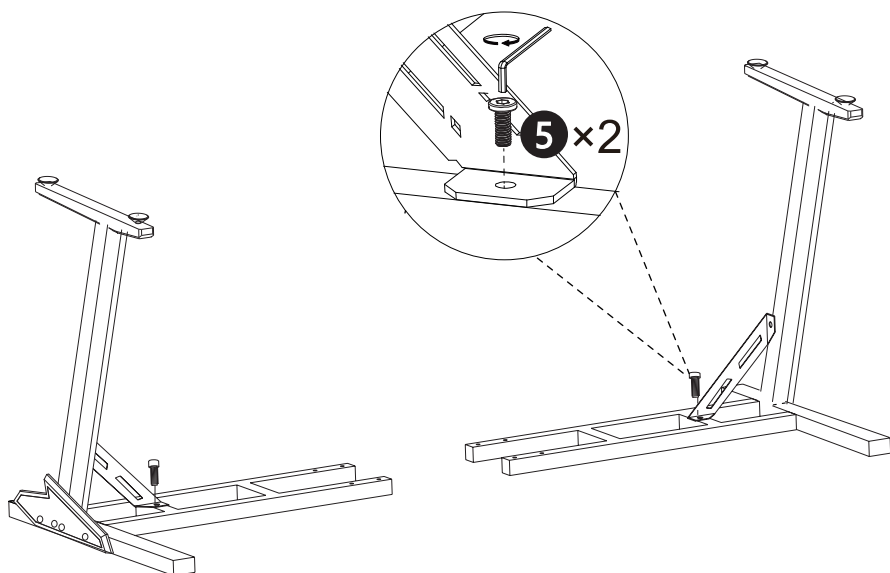
Step 2



ASSEMBLY GUIDE STEP 3



5×2



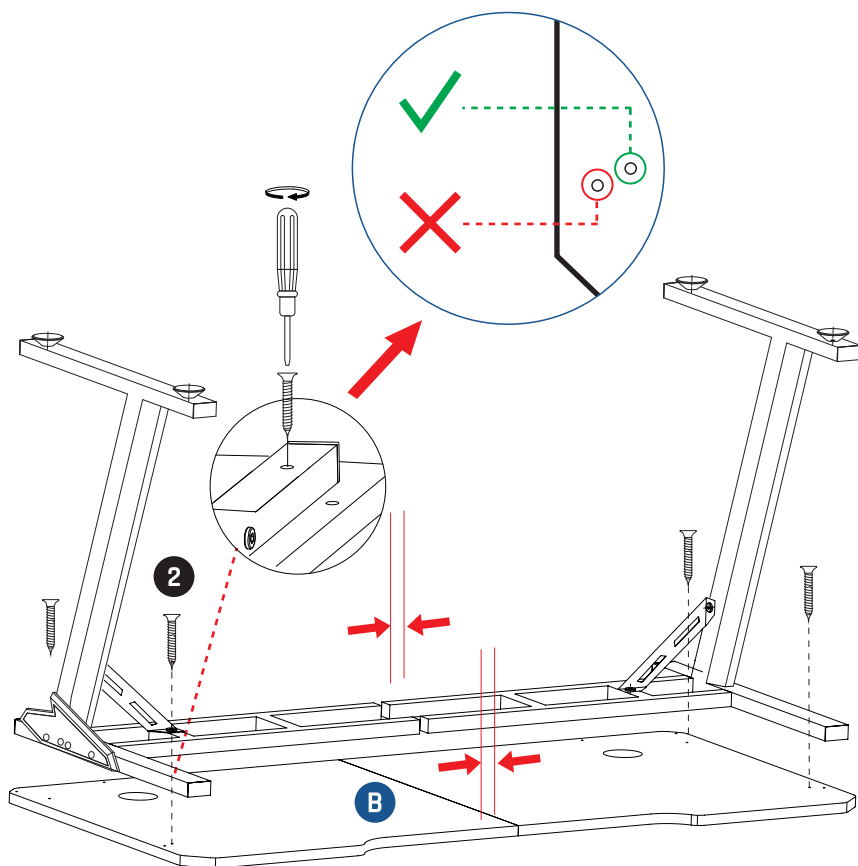
ASSEMBLY GUIDE STEP 4

8



2 x 4

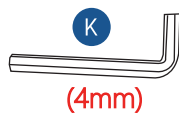
B x 2



REMARK:

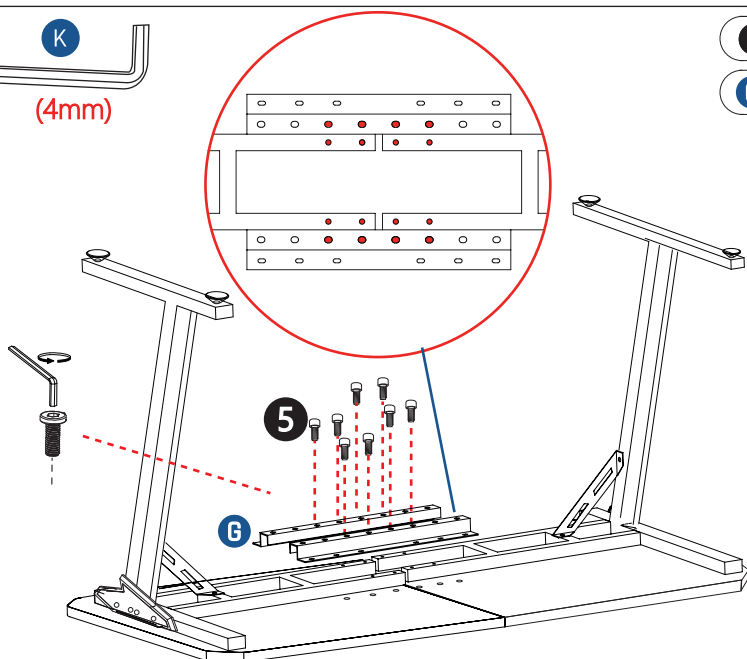
Put a blanket under the board to avoid scratch or damage.

ASSEMBLY GUIDE STEP 5

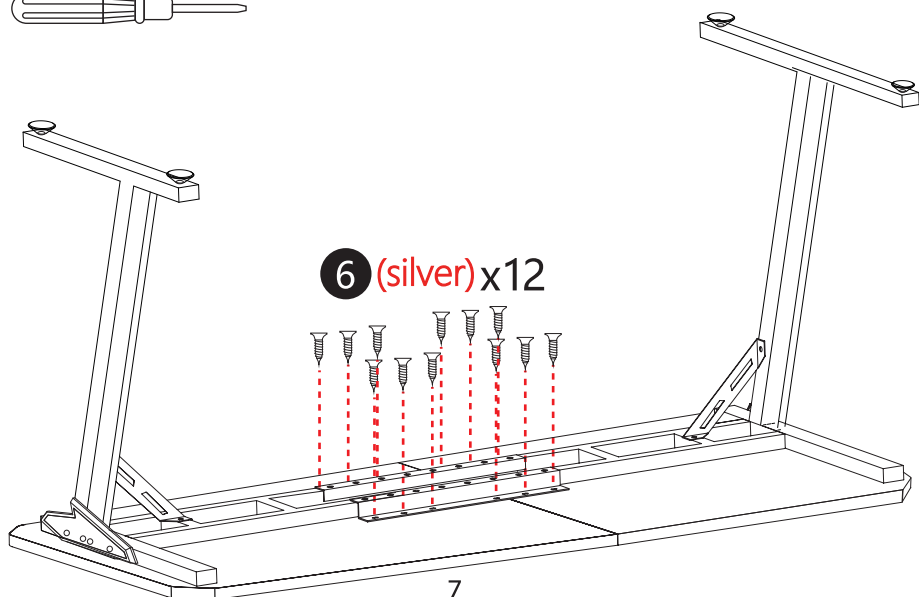


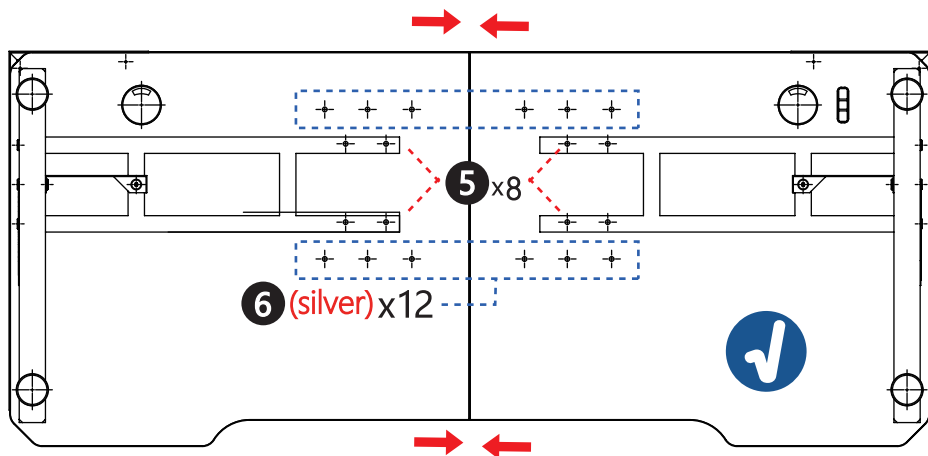
5 x 8

G x 1

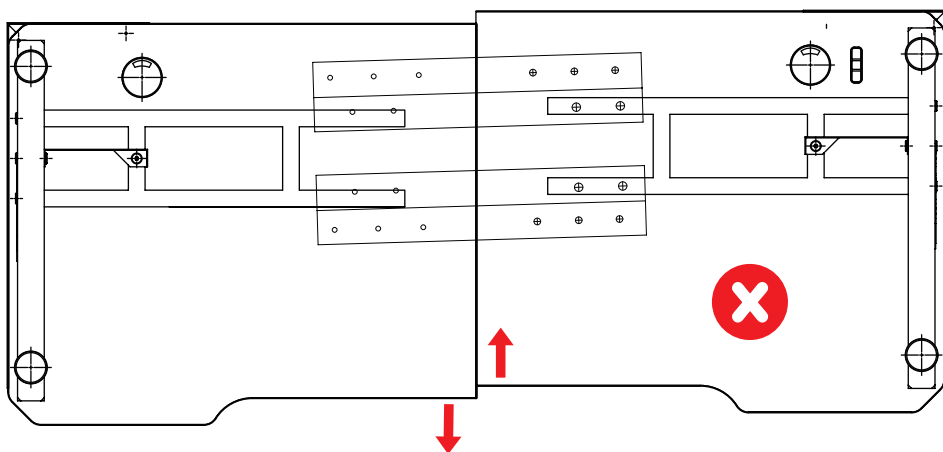


6 (silver) x 12





TIPS: Please align merge the boards, put the G part above the boards and line up each holes together at first. And then, we can screw all the holes in together. Pay attention, can't align the holes all in if you only screw one side holes which caused the boards unalign as follow.

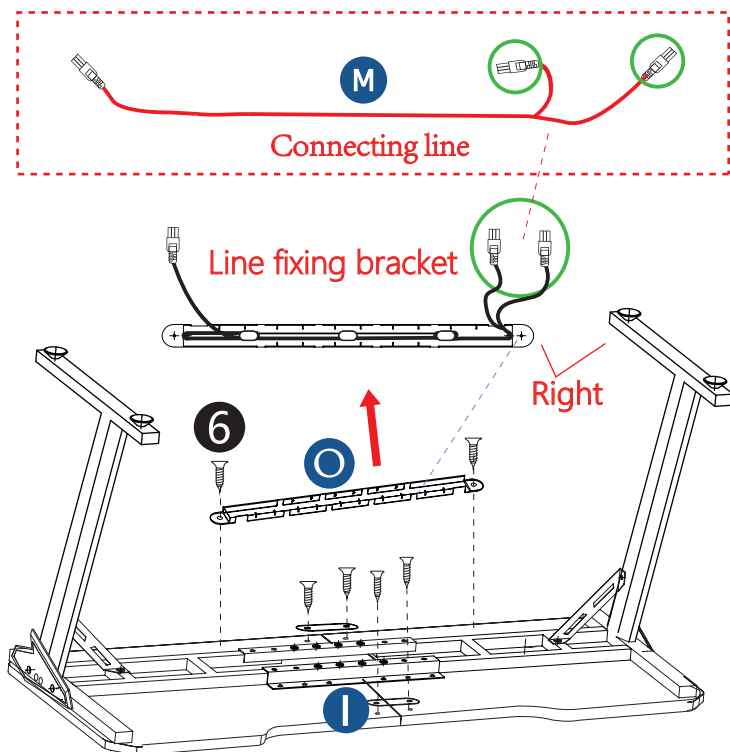


ASSEMBLY GUIDE STEP 6



6(silver)x6

I x2 **M** x1 **O** x1



(Pay attention to distinguish between left and right)

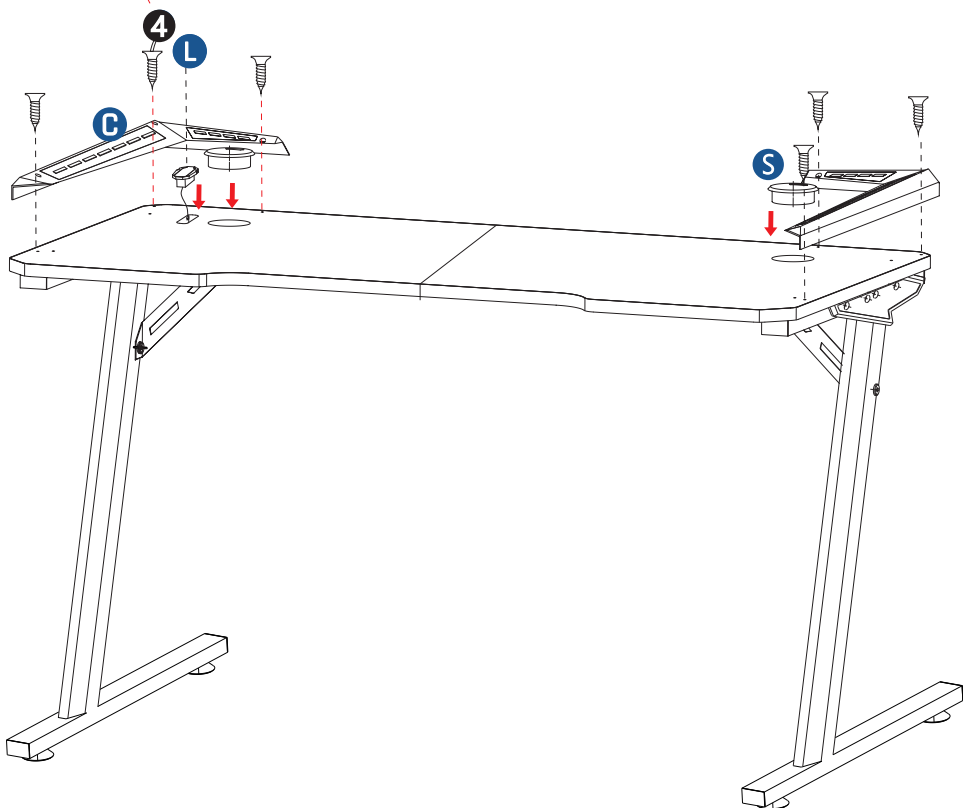
ASSEMBLY GUIDE STEP 7



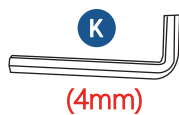
4 x6

C x2 L x1 S x2

4 (black) X6

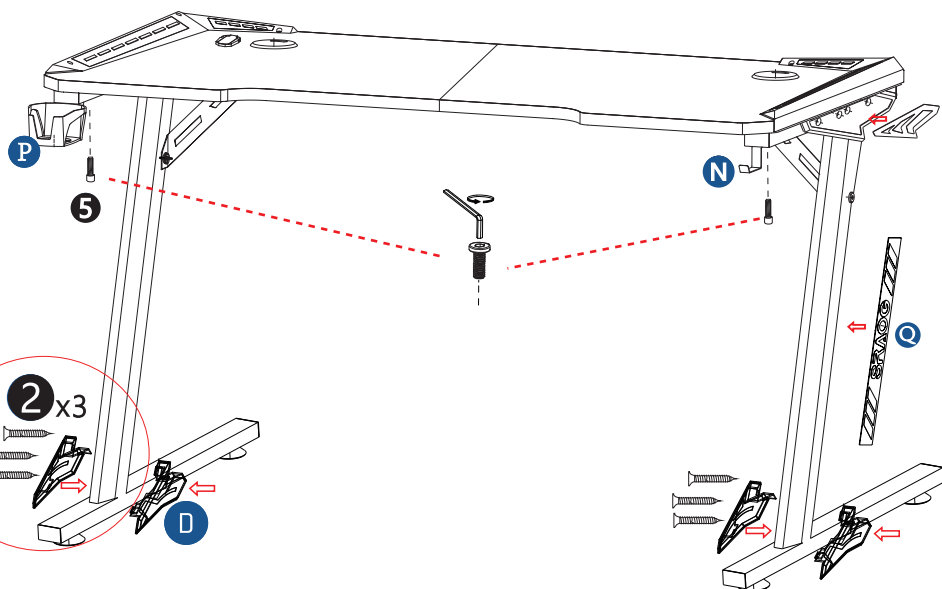


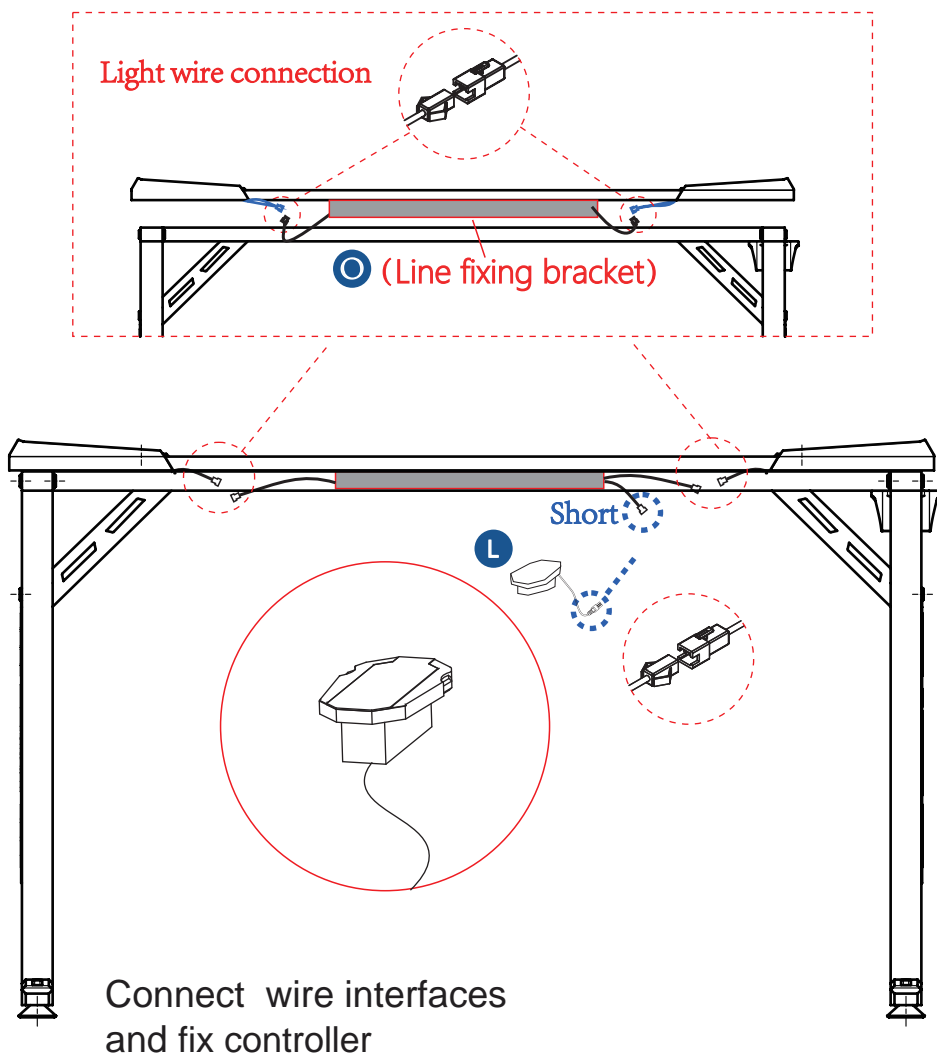
ASSEMBLY GUIDE STEP 8

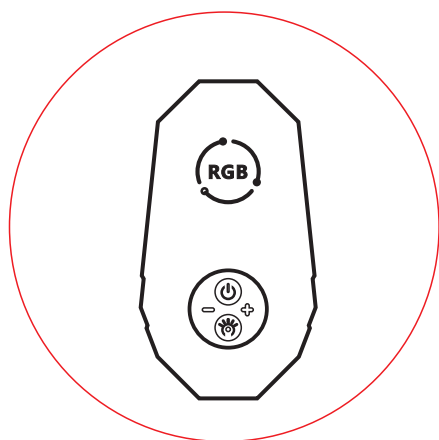


5×2 **2**×6





P×1 **N**×1 **Q**×4 **D**×4

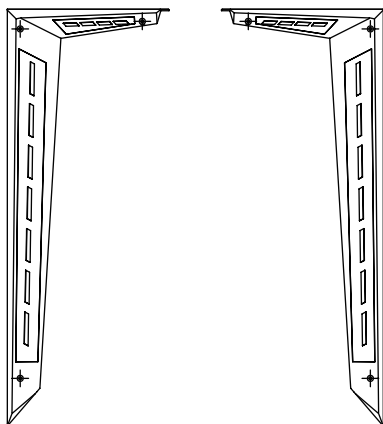









L Touch Button

①: Light button description	
 	
	ON/OFF ——— Brightness Adjustment
	RGB Lighting Effect Switch
②: Lighting Effect	
Breathing Mode	Alternate lights flicker, illuminate and darken
Dynamic Mode	All lights illuminate with same colour, then all change to alternate colour
Dazzing Mode	Lights illuminate in sequence around the desk



C Light Kit

Lighting Mode Description

Key Order	Button	
1		Press and hold to switch ON/OFF.
2		Press once to switch lighting mode.
3		Press once to adjust brightness.

